

SECTION VI

**MATERIALS, EQUIPMENT,
AND PROSTHETICS**

**MATERIALS
EQUIPMENT
PROSTHETICS**

**MATERIALS, EQUIPMENT,
AND PROSTHETICS**

SECTION VI

**MATERIALS, EQUIPMENT,
AND PROSTHETICS**

**MATERIALS
EQUIPMENT
PROSTHETICS**



MODEL 749

SHEARBAN® LOW FRICTION INTERFACE MATERIAL FOR ORTHOTICS AND PROSTHETICS

Shearban® is a revolutionary new product designed and developed by Tamarack Habilitation Technologies, Inc. to help you manage friction quickly, easily, and cost effectively.

Shearban® is available in pre-cut, self adhesive shapes that are available in blue or beige. The original sheet form, shown below, is also available. All shapes have been clinically tested and conform to specific areas of an orthotic or prosthetic device. The sheet form allows you to cut a customized pattern to fit unique applications.

Shearban® provides benefits to your patients by increasing the comfort and performance of your orthotic or prosthetic design.

US Patent 6,362,387



MODEL 749

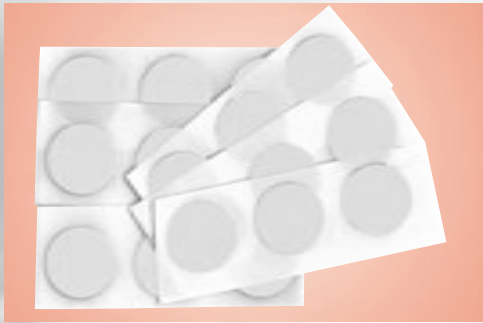
SHEARBAN® SHEETS (ONE SIZE ONLY)

Each box contains five 8" x 12" Shearban® sheets. Single 8" x 12" sheets may also be ordered.

| Order No. | Description | Color |
|------------|-------------------------------------|-------|
| 749-Beige | (5) 8" x 12" Adhesive Backed Sheets | Beige |
| 749-Blue | (5) 8" x 12" Adhesive Backed Sheets | Blue |
| 749S-Beige | (1) 8" x 12" Adhesive Backed Sheets | Beige |
| 749S-Blue | (1) 8" x 12" Adhesive Backed Sheets | Blue |

SHEARBAN® PRECUT PATCHES

RIVET COVER PATCHES



| Order No. | Description | Color |
|-----------|-------------------|-------|
| 749-7 | Rivet Cover Patch | Beige |

Contains 138 patches per box

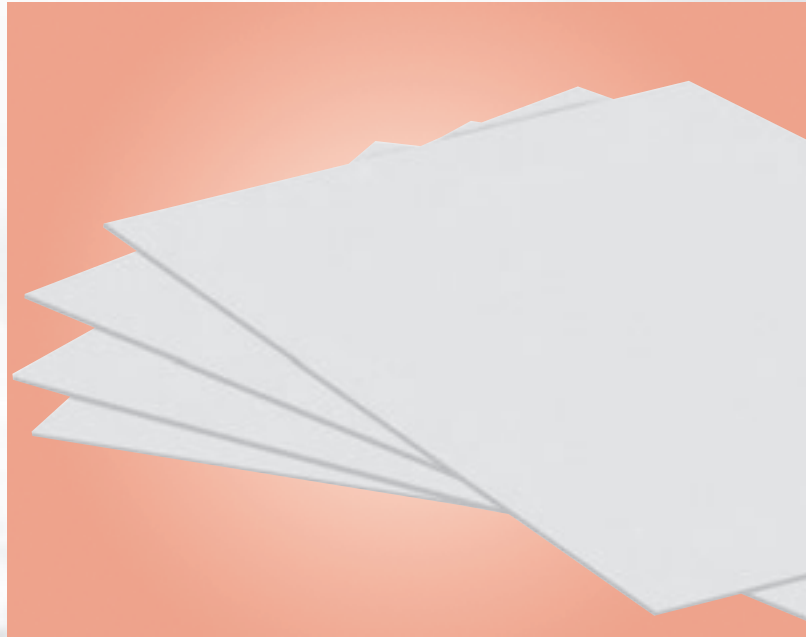
COSMETIC PATCHES



| Order No. | Description | Color |
|-----------|---|-------|
| 749-740 | Cosmetic Shearban® Patches for Tamarack Flexure Joints™ | Beige |

PLASTIC SHEETS

The plastic sheets detailed below are cost-effective, high quality materials used in vacuum forming and drape molding.



COPOLYMER PLASTIC SHEETS

| Order No. | Material | Dimensions |
|-----------|-----------|-------------------|
| MCP-824 | Copolymer | 1/8" x 24" x 48" |
| MCP-624 | Copolymer | 3/16" x 24" x 48" |
| MCP-648 | Copolymer | 3/16" x 36" x 48" |
| MCP-424 | Copolymer | 1/4" x 24" x 48" |
| MCP-436 | Copolymer | 1/4" x 36" x 48" |

POLYPROPYLENE PLASTIC SHEETS

| Order No. | Material | Dimensions |
|-----------|---------------|-------------------|
| MPP-824 | Polypropylene | 1/8" x 24" x 48" |
| MPP-636 | Polypropylene | 3/16" x 36" x 48" |
| MPP-648 | Polypropylene | 3/16" x 24" x 48" |
| MPP-424 | Polypropylene | 1/4" x 24" x 48" |

LOW DENSITY POLYETHYLENE PLASTIC SHEETS

| Order No. | Material | Dimensions |
|-----------|--------------------------|-------------------|
| MPE-824 | Low Density Polyethylene | 1/8" x 24" x 48" |
| MPE-624 | Low Density Polyethylene | 3/16" x 24" x 48" |
| MPE-648 | Low Density Polyethylene | 3/16" x 36" x 48" |
| MPE-424 | Low Density Polyethylene | 1/4" x 24" x 48" |
| MPE-436 | Low Density Polyethylene | 1/4" x 36" x 48" |

COMPCORE®

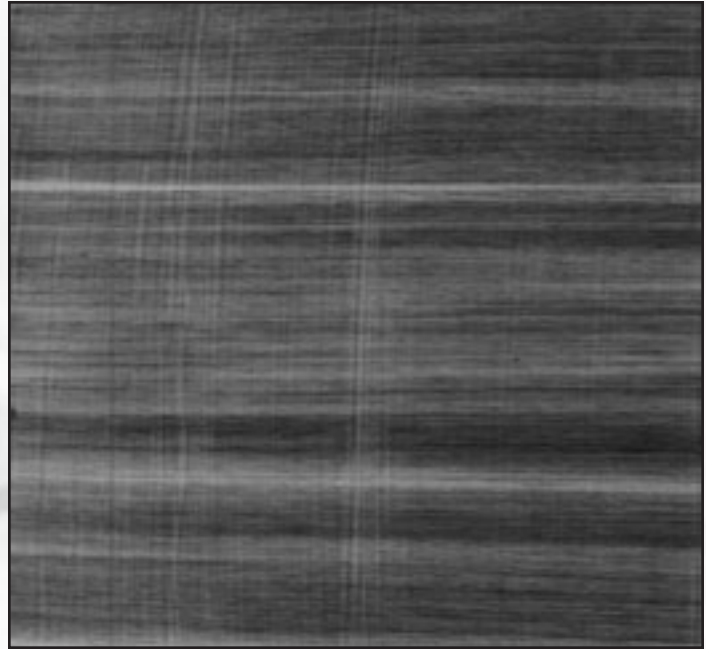
Becker Orthopedic developed Compcore® to provide the O & P field with a carbon reinforcement that bonds to polypropylene. This unique material provides approximately a 50% increase in the rigidity of the host plastic without the need to mechanically affix it to the host orthosis.

US Patent 5,312,669

MODEL MCC-412/MCC-415 COMPCORE® PANELS

Compcore® Panels allow the technician or orthotist to create custom Compcore® shapes and sizes for use in almost any application. Available in two thicknesses.

| Order No. | Dimensions |
|-----------|-------------------|
| MCC-412 | 0.06" x 12" x 12" |
| MCC-415 | 0.09" x 12" x 12" |

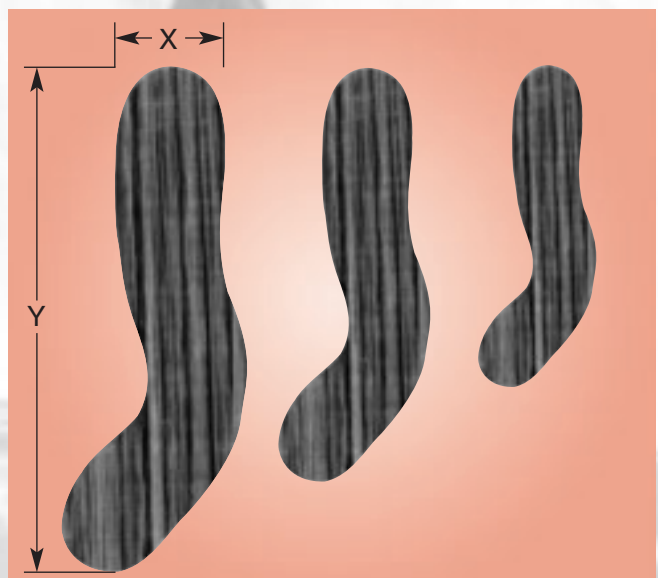


MODEL MCC-1000 COMPCORE ANKLEFORMS®

Compcore Ankleforms® are precut AFO reinforcements that were designed to reduce fabrication time. They are available in three sizes, and two thicknesses. Sold in pairs.

| Order No. | Size | Thickness | Dimensions | |
|-----------|--------|-----------|------------|--------|
| | | | X | Y |
| MCC-1000 | Small | 0.06" | 3/4" | 3-5/8" |
| MCC-1010 | Medium | 0.06" | 1" | 4-3/4" |
| MCC-1020 | Large | 0.06" | 1-1/4" | 6" |

| Order No. | Size | Thickness | Dimensions | |
|-----------|--------|-----------|------------|--------|
| | | | X | Y |
| MCC-1001 | Small | 0.09" | 3/4" | 3-5/8" |
| MCC-1011 | Medium | 0.09" | 1" | 4-3/4" |
| MCC-1021 | Large | 0.09" | 1-1/4" | 6" |



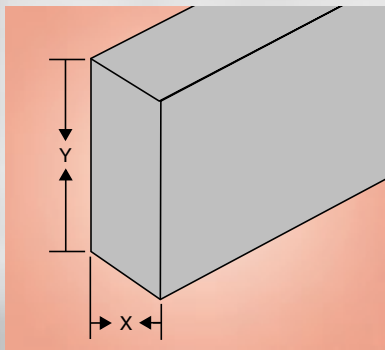
MODEL HY-801 ULTRA G® BRAIDS

These carbon graphite braids were developed by Wade Bader, CPO, to provide extremely lightweight, strong and durable orthoses. Ultra G® allows the orthotist to control the location, direction and quantities of fibers quickly and easily.



10 Foot Packages

| Order No. | Dimensions | Description |
|------------|--------------|------------------------------|
| HY-801-001 | 3/4" x 10' | Carbon Kevlar Braided Tube |
| HY-801-002 | 3/8" x 10' | Carbon Graphite Braided Tube |
| HY-801-003 | 3/4" x 10' | Carbon Graphite Braided Tube |
| HY-801-004 | 1" x 10' | Carbon Graphite Braided Tube |
| HY-801-005 | 1-1/4" x 10' | Carbon Graphite Braided Tube |
| HY-801-007 | 1/2" x 10' | Carbon Kevlar Braided Tube |



ALUMINUM AND STAINLESS STEEL BAR STOCK

Becker Orthopedic uses the finest raw materials available. The bar stock listed below meets our standards, as well as those of the American Society for Testing and Materials (ASTM). Bar stock is generally shipped via UPS and sold in three and six foot lengths. Twelve foot lengths are available on large orders, but special shipping arrangements must be made.

ROUND EDGE ALUMINUM BAR STOCK

| Order No. | Material | Alloy | Edge | Lengths Available | Dimensions | |
|--------------|----------|---------|-------|-------------------|------------|------|
| | | | | | X | Y |
| A-1/4 x 3/4 | Aluminum | 2024-T4 | Round | 3' and 6' | 1/4" | 3/4" |
| A-1/4 x 5/8 | Aluminum | 2024-T4 | Round | 3' and 6' | 1/4" | 5/8" |
| A-3/16 x 1/2 | Aluminum | 2024-T4 | Round | 3' and 6' | 3/16" | 1/2" |
| A-3/16 x 3/4 | Aluminum | 2024-T4 | Round | 3' and 6' | 3/16" | 3/4" |
| A-3/16 x 5/8 | Aluminum | 2024-T4 | Round | 3' and 6' | 3/16" | 5/8" |

SQUARE EDGE ALUMINUM BAR STOCK

| Order No. | Material | Alloy | Edge | Lengths Available | Dimensions | |
|---------------|----------|---------|--------|-------------------|------------|------|
| | | | | | X | Y |
| AT-1/4 x 3/4 | Aluminum | 2024-T4 | Square | 3' and 6' | 1/4" | 3/4" |
| AT-3/16 x 3/4 | Aluminum | 2024-T4 | Square | 3' and 6' | 3/16" | 3/4" |
| AT-1/8 x 1/2 | Aluminum | 2024-T4 | Square | 4' only | 1/8" | 1/2" |
| AT-1/4 x 5/8 | Aluminum | 2024-T4 | Square | 3' and 6' | 1/4" | 5/8" |
| AT-3/16 x 5/8 | Aluminum | 2024-T4 | Square | 3' and 6' | 3/16" | 5/8" |
| AT-3/16 x 1/2 | Aluminum | 2024-T4 | Square | 3' and 6' | 3/16" | 1/2" |

ROUND EDGE STAINLESS STEEL BAR STOCK

| Order No. | Material | Alloy | Edge | Lengths Available | Dimensions | |
|--------------|-----------------|--------|-------|-------------------|------------|------|
| | | | | | X | Y |
| S-3/16 x 3/4 | Stainless Steel | 304-2B | Round | 3' and 6' | 3/16" | 3/4" |
| S-5/32 x 3/4 | Stainless Steel | 304-2B | Round | 3' and 6' | 5/32" | 3/4" |
| S-3/16 x 5/8 | Stainless Steel | 304-2B | Round | 3' and 6' | 3/16" | 5/8" |
| S-5/32 x 5/8 | Stainless Steel | 304-2B | Round | 3' and 6' | 5/32" | 5/8" |
| S-3/16 x 1/2 | Stainless Steel | 304-2B | Round | 3' and 6' | 3/16" | 1/2" |
| S-1/8 x 1/2 | Stainless Steel | 304-2B | Round | 3' and 6' | 1/8" | 1/2" |

SQUARE EDGE SPRING STEEL BAR STOCK

| Order No. | Material | Alloy | Edge | Lengths Available | Dimensions | |
|-----------------|--------------|---------|--------|-------------------|------------|--------|
| | | | | | X | Y |
| SS-1/32 x 1-1/2 | Spring Steel | 1095 | Square | 3' and 6' | 1/32" | 1-1/2" |
| SS-1/16 x 1-1/2 | Spring Steel | 1095 | Square | 3' and 6' | 1/16" | 1-1/2" |
| SS-3/32 x 1-1/2 | Spring Steel | 1074-5S | Square | 3' and 6' | 3/32" | 1-1/2" |

SQUARE EDGE ALUMINUM BAND STOCK

| Order No. | Material | Alloy | Edge | Lengths Available | Dimensions | |
|-----------|---------------------|---------|--------|-------------------|------------|--------|
| | | | | | X | Y |
| BS-1.5 | Aluminum Band Stock | 2024-T3 | Square | 3' and 6' | 1/8" | 1-1/2" |
| BS-2 | Aluminum Band Stock | 2024-T3 | Square | 3' and 6' | 1/8" | 2" |

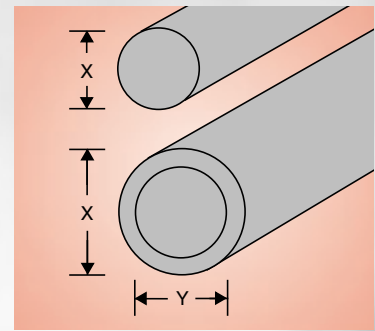
SQUARE EDGE STAINLESS STEEL BAND STOCK

| Order No. | Material | Alloy | Edge | Lengths Available | Dimensions | |
|-----------|----------------------------|--------|--------|-------------------|------------|--------|
| | | | | | X | Y |
| BSS-1.5 | Stainless Steel Band Stock | 304-2B | Square | 5' Max. Length | 1/8" | 1-5/8" |
| BSS-1.75 | Stainless Steel Band Stock | 304-2B | Square | 5' Max. Length | 1/8" | 1-3/4" |
| BSS-2 | Stainless Steel Band Stock | 304-2B | Square | 5' Max. Length | 1/8" | 2" |

STAINLESS STEEL RODS AND TUBES

Please refer to the chart below for ordering information.

| Order No. | Material | Alloy | Lengths Available | Dimensions | |
|-----------|----------------------|-------|-------------------|------------|-------|
| | | | | X | Y |
| R-1/4 | Stainless Steel Rod | 304 | 6' Max. Length | 1/4" | ~ |
| R-5/16 | Stainless Steel Rod | 304 | 6' Max. Length | 5/16" | ~ |
| T-1/4 | Stainless Steel Tube | 304 | 6' Max. Length | 1/4" | .152" |
| T-5/16 | Stainless Steel Tube | 304 | 6' Max. Length | 5/16" | .183" |



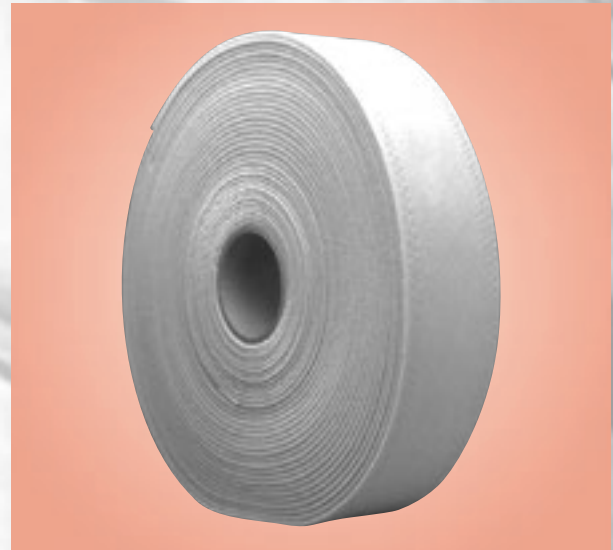
C-FOLD/HOOK & LOOP

Available in 25 yard rolls only.

| C-Fold Loops | | | |
|--------------|-------------|--------|-------|
| Order No. | Description | Width | Color |
| 0110-C | C-Fold Loop | 1" | Beige |
| 0115-C | C-Fold Loop | 1-1/2" | Beige |
| 0120-C | C-Fold Loop | 2" | Beige |
| 0130-C | C-Fold Loop | 3" | Beige |
| 0310-C | C-Fold Loop | 1" | White |
| 0315-C | C-Fold Loop | 1-1/2" | White |
| 0320-C | C-Fold Loop | 2" | White |
| 0330-C | C-Fold Loop | 3" | White |
| 0310-C-B | C-Fold Loop | 1" | Black |
| 0315-C-B | C-Fold Loop | 1-1/2" | Black |
| 0320-C-B | C-Fold Loop | 2" | Black |
| 0330-C-B | C-Fold Loop | 3" | Black |

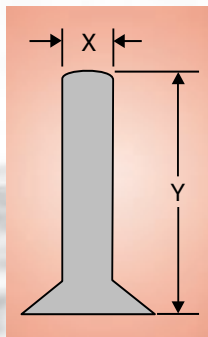
| Loop | | | |
|-----------|-------------|--------|-------|
| Order No. | Description | Width | Color |
| 0110-L | Loop | 1" | Beige |
| 0115-L | Loop | 1-1/2" | Beige |
| 0120-L | Loop | 2" | Beige |
| 0175-L | Loop | 3/4" | Beige |
| 0210-L | Loop | 1" | Black |
| 0215-L | Loop | 1-1/2" | Black |
| 0220-L | Loop | 2" | Black |
| 0275-L | Loop | 3/4" | Black |
| 0310-L | Loop | 1" | White |
| 0315-L | Loop | 1-1/2" | White |
| 0320-L | Loop | 2" | White |
| 0375-L | Loop | 3/4" | White |

| Hook | | | |
|-----------|-------------|--------|-------|
| Order No. | Description | Width | Color |
| 0110-H | Hook | 1" | Beige |
| 0115-H | Hook | 1-1/2" | Beige |
| 0120-H | Hook | 2" | Beige |
| 0175-H | Hook | 3/4" | Beige |
| 0210-H | Hook | 1" | Black |
| 0215-H | Hook | 1-1/2" | Black |
| 0220-H | Hook | 2" | Black |
| 0275-H | Hook | 3/4" | Black |
| 0310-H | Hook | 1" | White |
| 0315-H | Hook | 1-1/2" | White |
| 0320-H | Hook | 2" | White |
| 0375-H | Hook | 3/4" | White |



RIVETS

Sold by the pound and quarter pound.



| Order No. | X | Y | Type | Material | Use |
|-----------|--------|--------|------------------|-----------|-----------------------------------|
| RVT-A | 3/16" | 5/8" | 90° Counter Sunk | Stainless | "A" Knee Joints |
| RVT-BL | 5/32" | 5/8" | 90° Counter Sunk | Stainless | "B" 1/4" Knee Joints |
| RVT-BS | 5/32" | 17/32" | 90° Counter Sunk | Stainless | "B" Knee Joints; "A" Ankle Joints |
| RVT-C | 1/8" | 1/2" | 90° Counter Sunk | Stainless | "C" Knee and Ankle Joints |
| RVT-D | 1/8" | 3/4" | Flat Head | Stainless | Attach Bands |
| RVT-E | 1/8" | 11/16" | Flat Head | Aluminum | Temporary Band Attachment |
| RVT-F | 9/64" | 1-1/4" | Flat Head | Copper | Attach Stirrup |
| RVT-G | 11/64" | 1" | Flat Head | Copper | Attach Stirrup |

NOTE: To order by the quarter pound, please add 1/4 to the end of your order. For example, to order a quarter pound of RVT-A, your order number would be RVT-A-1/4.

SECTION VI

**MATERIALS, EQUIPMENT,
AND PROSTHETICS**

**MATERIALS
EQUIPMENT
PROSTHETICS**



MODEL F1000 ORTHOTIC WORKSTATION

The Orthotic Workstation was developed to provide a tool to increase productivity and accuracy in fabrication. It provides the ability to contour sidebars while maintaining the exact alignment desired. The set collar allows return to alignment even if the cast is removed or delayed in fabrication. There are various gradations on the workstation so you may record alignment position. Available in three different variations.

NOTE: All models, with the exception of F1000, must be shipped by truck.



Bench Top Model



Floor Model



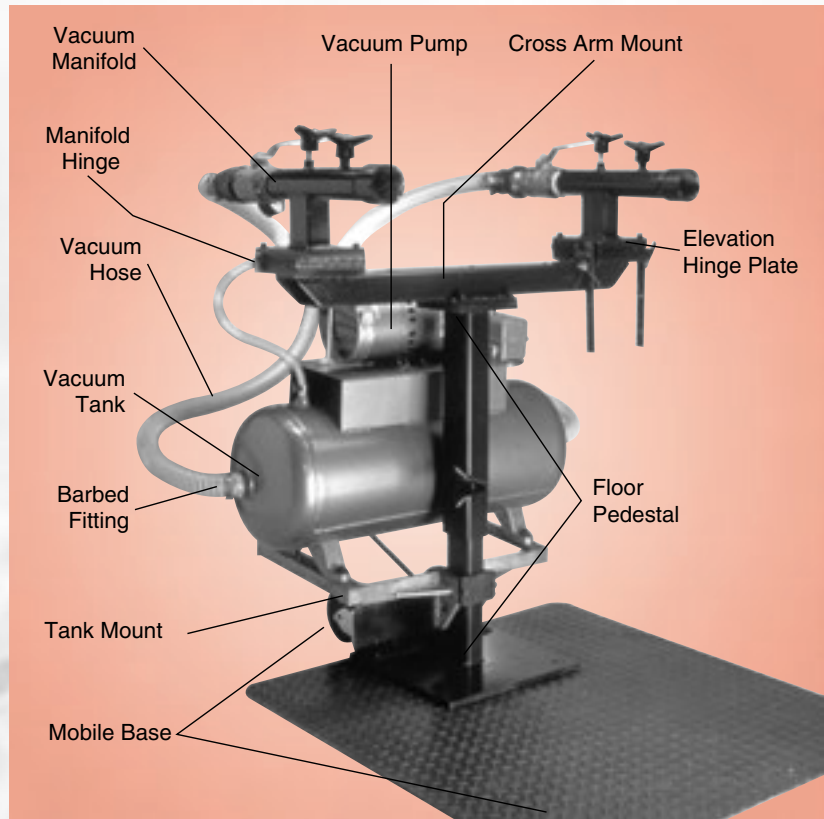
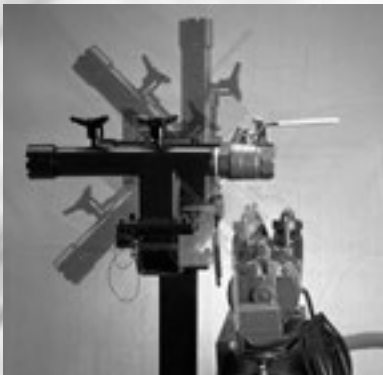
Portable Model

| Order No. | Description |
|-----------|------------------------|
| F1000 | Bench Top Model |
| F1001 | Floor Model |
| F1002 | Portable Model |
| F1010 | Additional Set Collars |

MODEL MY-005-000 THE VACSTATION™

The VacStation™ was developed to deliver consistent dynamic performance standards for vacuum forming. Tests have proven that consistency of pressure during vacuum forming reduces plastic warpage. This results in more consistent product quality and less scrap. The VacStation™ is a combination of unique components that may be purchased as a complete system or as componentry that may be incorporated into your current system.

Manifold Pivot Hinge



| Order No. | Description |
|------------|---|
| MY-005-000 | Complete VacStation™ with one elevation hinge plate |
| MY-005-001 | VacStation™ without mobile base, tank and pump assemblies |

NOTE: The full VacStation™ is shipped by truck and assembly is required (assembly instructions included). Replacement parts for the VacStation™ are available. Please contact our customer service department for details.

MODEL MY-006-000 VACSTATION BT™

The VacStation BT™ is based on the same industrial process standard as our original VacStation™ thermoforming system. It has been designed for fabrication of lower extremity and spinal orthoses.

The molding manifold is attached to the integral surge tank providing instantaneous application of molding pressure. Simply connect your in-house vacuum source to the barbed fitting and charge the system. It is recommended your vacuum source is capable of pulling a minimum of 26 inches (.88 bar) of mercury to meet prescribed industrial standards.



| Order No. | Description |
|------------|-------------------------|
| MY-006-000 | Complete VacStation BT™ |

MODEL P1000 THERMOCLAD™

Thermoclad™ is a polymer finish that offers corrosion protection and cosmetic appeal for metal orthotic and prosthetic components. The Thermoclad™ system utilizes a fluidized bed applicator, nonsolvent based powder and your oven. Heated components are dipped into the fluidized powder bed, bonding the polymer into a seamless color finish. The Thermoclad™ system may be ordered in cost saving starter kits or the fluidized bed and powder may be ordered separately in eight different colors.



Thermoclad™ Fluidized Bed



Thermoclad™ Fluidized Sidebar Bed

THERMOCLAD™ KITS AND BEDS

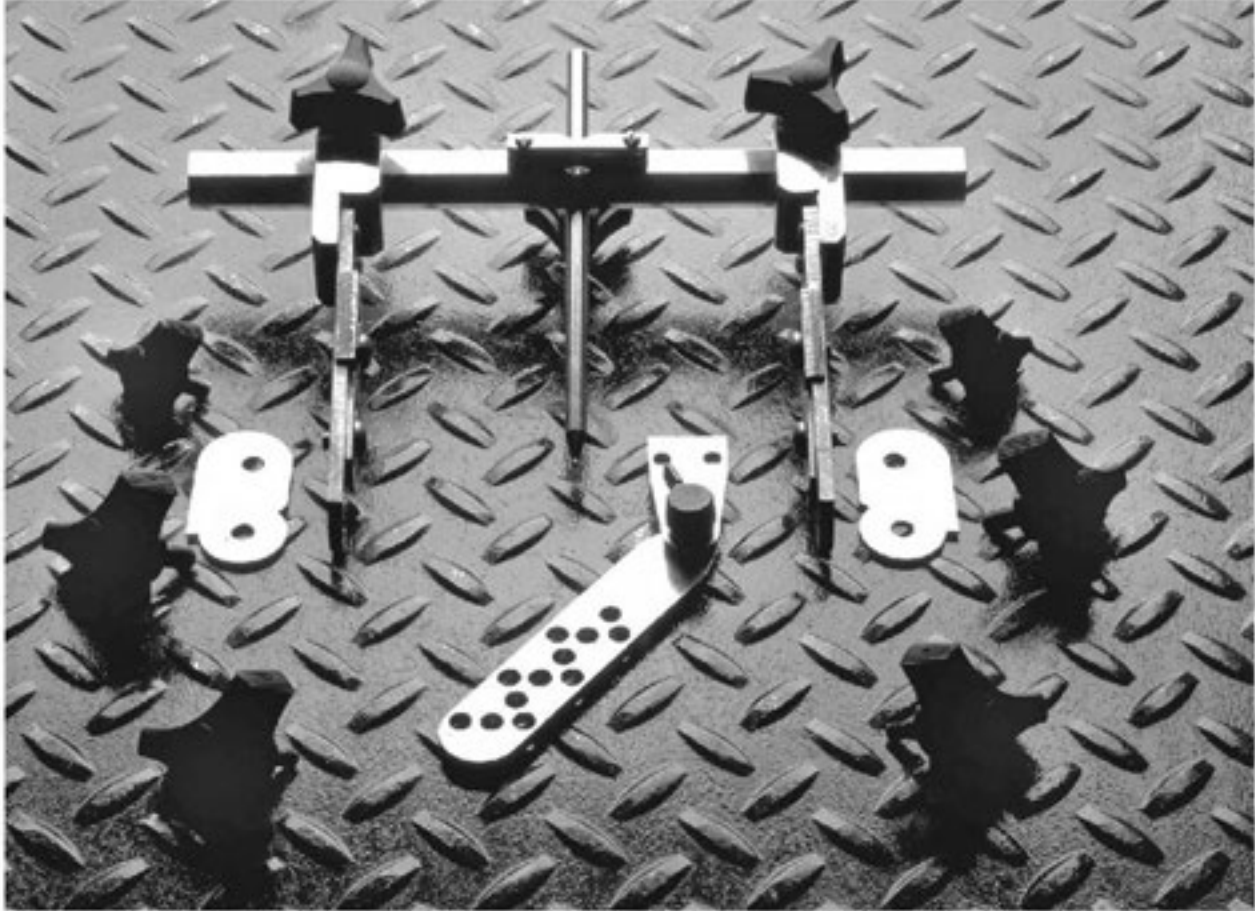
| Order No. | Description | Color |
|-----------|---|-------|
| P1020 | Starter Kit - Includes 15" Fluidized Bed and 80 lbs. of Powder | Black |
| P1021 | Starter Kit - Includes 15" Fluidized Bed and 80 lbs. of Powder | White |
| P1025 | Sidebar Starter Kit - Includes Sidebar Fluidized Bed and (2) 4 lb. Bags of Powder | Any |
| P1026 | Thermoclad™ 15" Fluidized Bed Only | - |
| P1028 | Thermoclad™ Sidebar Fluidized Bed Only | - |

THERMOCLAD™ POWDER ONLY

| Order No. | Description | Color |
|-----------|--|--------|
| P1000 | Thermoclad™ Powder Only - 40 lb. Bag | Black |
| P1001 | Thermoclad™ Powder Only - 40 lb. Bag | White |
| P1002 | Thermoclad™ Powder Only - 40 lb. Bag | Yellow |
| P1003 | Thermoclad™ Powder Only - 40 lb. Bag | Red |
| P1004 | Thermoclad™ Powder Only - 40 lb. Bag | Green |
| P1005 | Thermoclad™ Powder Only - 40 lb. Bag | Grey |
| P1006 | Thermoclad™ Powder Only - 40 lb. Bag | Blue |
| P1007 | Thermoclad™ Powder Only - 40 lb. Bag | Clear |
| P1027 | Thermoclad™ Powder Only - 4 lb. Bag for Sidebar System | Any |

MODEL MY-010-000 UNIVERSAL ALIGNMENT DEVICE

The Universal Alignment Device, developed in collaboration with John Ficociello, CPO, is a multipurpose fabrication tool for alignment of orthotic knee and ankle joints, including Oklahoma ankle joints.



Oklahoma Ankle Joint Alignment



Knee Joint Alignment

| Order No. | Description |
|------------|----------------------------|
| MY-010-000 | Universal Alignment Device |

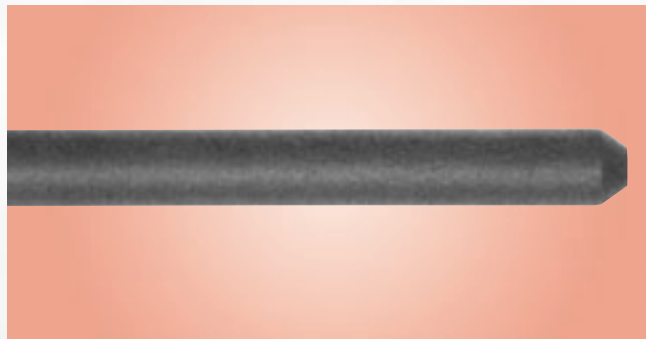
NOTE: Replacement parts for the Universal Alignment Device are available. Please contact our customer service department for details.

SUPPLIES FOR INSTALLING BALL CATCHES

MODEL T-1 CORKING TOOL

Model T-1 was designed to install ball catches on hip joints and knee joints. If you wish to have your joints shipped with ball catches already installed, please refer to page 4.4.2 for ordering information.

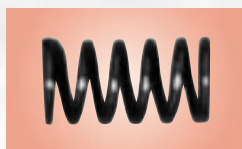
| Order No. | Size | Description |
|-----------|-------|----------------------|
| T-18 | 1/8" | Corking Tool - Small |
| T-16 | 3/16" | Corking Tool - Large |



MODEL BCS BALL CATCH SPRING

Sold individually.

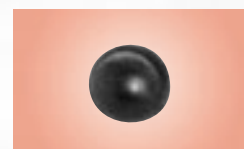
| Order No. | Size | Description |
|-----------|-------|---------------------------|
| BCS-1/8 | 1/8" | Ball Catch Spring - Small |
| BCS-3/16 | 3/16" | Ball Catch Spring - Large |



MODEL BCB BALL CATCH BALL BEARING

Sold individually.

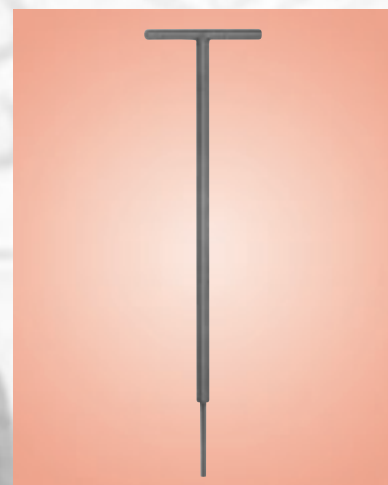
| Order No. | Size | Description |
|-----------|-------|----------------------------|
| BCB-1/8 | 1/8" | Ball Catch Bearing - Small |
| BCB-3/16 | 3/16" | Ball Catch Bearing - Large |



MODELS T-23 AND T-25 HEX WRENCH WITH "T" HANDLE

Model T-23 and T-25 were designed to give orthotists and technicians greater leverage on set screws.

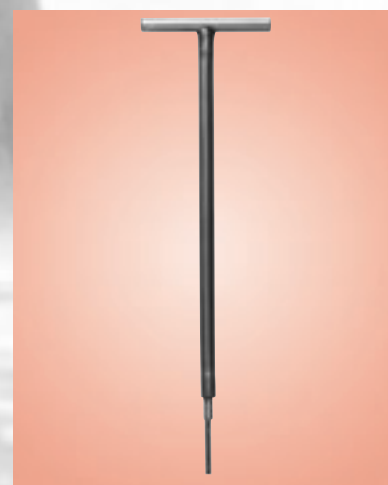
| Order No. | Size | Description |
|-----------|-------|----------------------------|
| T-23 | 1/8" | Hex Wrench with "T" Handle |
| T-25 | 5/32" | Hex Wrench with "T" Handle |



MODELS T-33 AND T-35 HEX WRENCH WITH "T" HANDLE AND FLEXIBLE SHAFT

Model T-33 and T-35 were designed to give orthotists and technicians a set screw tool that can get to those hard-to-reach areas.

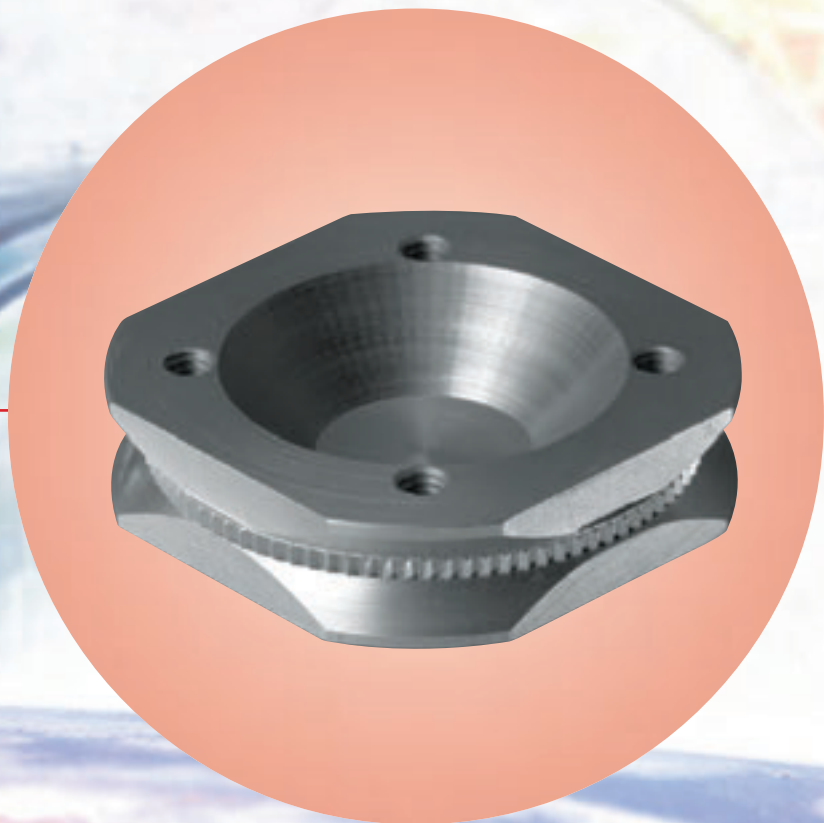
| Order No. | Size | Description |
|-----------|-------|---|
| T-33 | 1/8" | Hex Wrench with "T" Handle and Flexible Shaft |
| T-35 | 5/32" | Hex Wrench with "T" Handle and Flexible Shaft |



SECTION VI

**MATERIALS, EQUIPMENT,
AND PROSTHETICS**

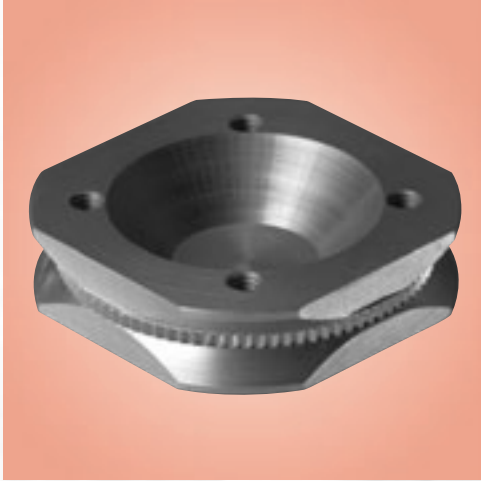
**MATERIALS
EQUIPMENT
PROSTHETICS**



COUPLER™

The Coupler™ was developed by Wendy Beattie, CPO, to provide a more secure attachment between the pylon and socket. The Coupler™ is machined of lightweight aluminum incorporating the European four hole design and is offered in three distinct designs appropriate for thermoplastic, laminated, endoskeletal and post-operative prostheses.

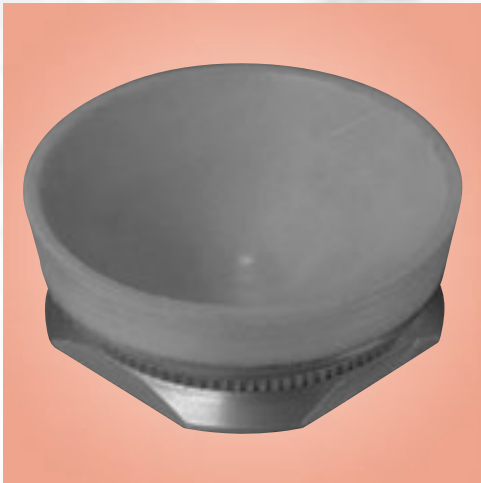
US Patent 5,163,965



MODEL P403000 COUPLER™ PLATE

The unique design of the Coupler™ Plate significantly decreases fabrication time. The Coupler™ Plate has deep undercuts and knurls eliminating the need to vacuum form the plastic under the plate. The conical pocket significantly improves the interface with the residual limb model. The Coupler™ Plate can be removed and reused. Complete fabrication instructions are included.

| Order No. | Description |
|-----------|----------------|
| P403000 | Coupler™ Plate |



MODEL P403005 COUPLER™ CONICAL BLOCK

The Coupler™ Conical Block incorporates all the features of the Coupler™ Plate, except it comes with molded urethane on the conical surface. This model should only be used in wet laminations. In many cases, the need for filler is eliminated. Sealing and grinding are rarely necessary.

| Order No. | Description |
|-----------|------------------------|
| P403005 | Coupler™ Conical Block |



MODEL P403010 COUPLER™ POST-OP

The Coupler™ Post-OP model consists of the basic Coupler™ Plate plus contoured stainless steel attachment uprights. The uprights are held in place using perpendicular grooves and screws.

| Order No. | Description |
|-----------|------------------|
| P403010 | Coupler™ Post-OP |

MODEL P4020 HYPERBOLIC™ ANKLE BLOCK

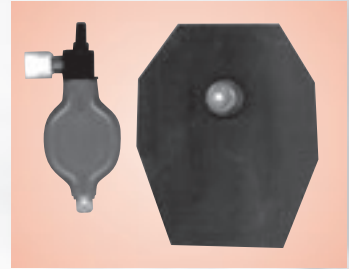
The unique design of this ankle block provides the prosthetist with an ankle shin interface that tests 5-1/2 times stronger than conventional ankle blocks in the unlaminated condition. The rigid polyurethane foam provides a lightweight construction and the stainless steel plate delivers increased life when utilized with energy storing feet. Available in three sizes with metric or SAE threads.



| Order No. | Size | Description | Bolt Threads |
|-----------|--------|------------------------|--------------|
| P4020A38 | Large | For Feet 10 - 13 | 3/8" x 16 |
| P4020A10 | Large | 27 - 30 cm | 10mm |
| P4020B38 | Medium | For Feet 6-1/2 - 10 | 3/8" x 16 |
| P4020B10 | Medium | 24 - 27 cm | 10mm |
| P4020C56 | Small | For Feet 6-1/2 or less | 5/16" x 18 |
| P4020C10 | Small | 24 cm or less | 10mm |
| P4020C08 | Small | 24 cm or less | 8mm |

MODEL PNEU-FIT™ PNEU-FIT™ AIR CELL SYSTEM

Pneu-Fit™ is a pneumatic volume compensating air cell system developed to enhance socket fit. The system allows patients to adjust socket volume in response to volumetric changes in their residual limbs without removal of the prosthesis. Pneu-Fit™ may be retro-fit into existing, as well as newly fabricated prostheses. The system consists of an air cell and mini-pump that comes equipped with an air release push button valve. Available in three sizes with straight, or angle flange stem. The manufacturer warranties the product for one year after the date of purchase. Pneu-Fit™ has been approved by the Veterans Administration.



| Order No. | Size | Stem Configuration | Air Cell Dimensions |
|-----------------|---------|--------------------|-------------------------|
| PNEUFIT-SSS-114 | Small | Straight | 1/16" x 2-3/4" x 3-1/4" |
| PNEUFIT-SAC-112 | Small | Angled | 1/16" x 2-3/4" x 3-1/4" |
| PNEUFIT-LSS-113 | Large | Straight | 1/16" x 3-3/4" x 4-3/4" |
| PNEUFIT-LAC-111 | Large | Angled | 1/16" x 3-3/4" x 4-3/4" |
| PNEUFIT-XLS-117 | X-Large | Straight | 1/16" x 4" x 6-3/4" |
| PNEUFIT-XLA-118 | X-Large | Angled | 1/16" x 4" x 6-3/4" |

MODEL 749 SHEARBAN® LOW-FRICTION INTERFACE MATERIAL FOR PROSTHETICS

Shearban® is a revolutionary new product designed and developed by Tamarack Habilitation Technologies, Inc. to help you manage friction quickly, easily, and cost effectively. Shearban® will benefit your patients by increasing the comfort and performance of your prosthetic design.

US Patent 6,362,387

SHEARBAN® SHEETS (ONE SIZE ONLY)



Each box contains five 8" x 12" Shearban® sheets. Single 8" x 12" sheets may also be ordered.

| Order No. | Description | Color |
|------------|-------------------------------------|-------|
| 749-Beige | (5) 8" x 12" Adhesive Backed Sheets | Beige |
| 749-Blue | (5) 8" x 12" Adhesive Backed Sheets | Blue |
| 749S-Beige | (1) 8" x 12" Adhesive Backed Sheet | Beige |
| 749S-Blue | (1) 8" x 12" Adhesive Backed Sheet | Blue |

RIVET COVER PATCHES



| Order No. | Description | Color |
|-----------|-------------------|-------|
| 749-7 | Rivet Cover Patch | Beige |

- Contains 138 patches per box

NOTE: For more information on Shearban®, please refer to pages 6.1.2 and 6.1.3